



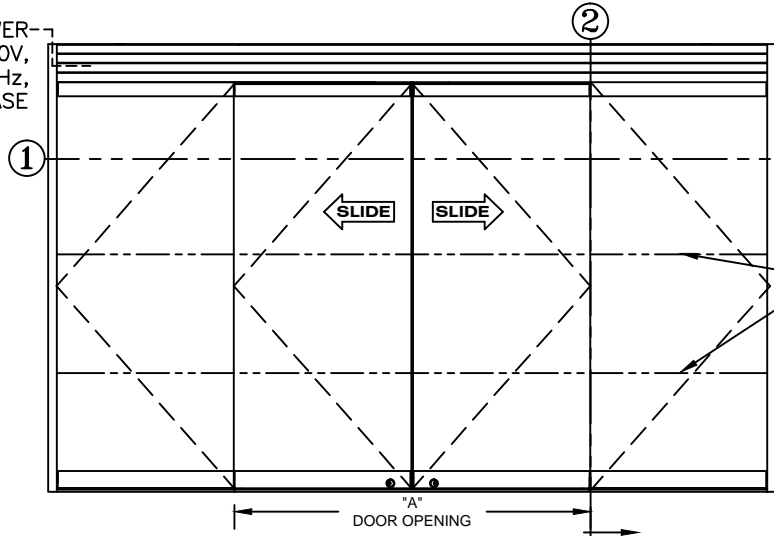
record-usa
4324 PHIL HARGETT CT.
MONROE, NC 28110
(704) 289 - 9212

SERIES 5200 ALL GLASS SLIDING DOORS

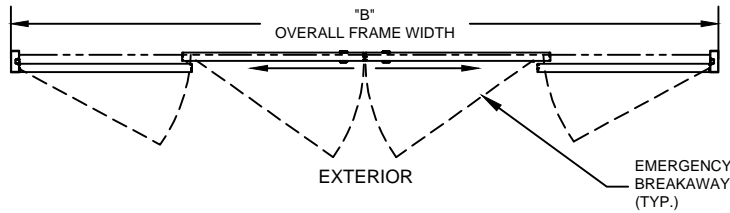
TYPE: 5206-1, S0-SX-SX-S0, BIPART

DWN.: BDA
DWG #: 52-2.06
DATE: 6/28/16

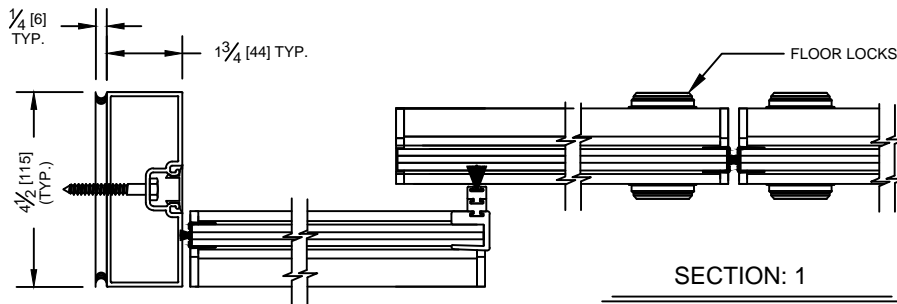
POWER-
120V,
15A, 60Hz,
1 PHASE



ELEVATION VIEW



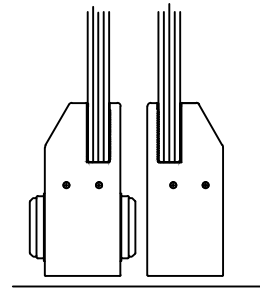
PLAN VIEW



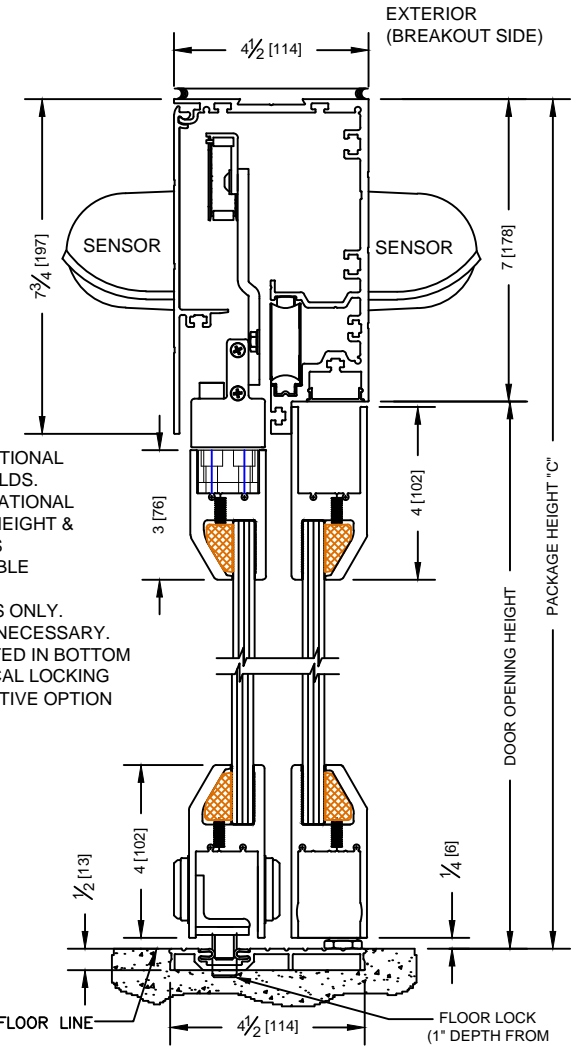
SECTION: 1

SAFETY
HOLD BEAMS
NOTES:

1. SEE SHEETS 51-2.86 THRU 51-2.91 FOR OPTIONAL TRANSOMS, BOTTOM GUIDES & THRESHOLDS.
2. REFER TO RELEVANT (LOCAL, STATE, NATIONAL OR AHJ) BUILDING CODE FOR MIN DOOR HEIGHT & MIN/MAX WIDTH ALLOWABLE FOR EGRESS REQUIREMENT IN CONJUNCTION WITH TABLE PROVIDED BELOW.
3. THIS PACKAGE WILL ACCEPT 1/2" GLASS ONLY.
4. NO GLASS PREP FOR INSTALLATION IS NECESSARY.
5. KEY CYLINDER FLOOR LOCKING MOUNTED IN BOTTOM OF SLIDING LEAF IS STANDARD. ELECTRICAL LOCKING (FAIL SAFE OR FAIL SECURE) AS ALTERNATIVE OPTION MOUNTED IN HEADER.



DOOR OPENING



SECTION: 2

DIMENSIONS FOR STANDARD PACKAGES

DOOR OPENING "A"	STD. PACKAGE WIDTH "B"	STD. PACKAGE HEIGHT "C" W OR W/O THRESHOLD	DOOR OPENING HEIGHT W/RECESSED THRESHOLD	DOOR OPENING HEIGHT W/ THRESHOLD	MAX OPENING MANUALLY
45 (1143)	108 (2753)	91 (2311)	83-1/4 (2115)	82-3/4 (2102)	95-11/16 (2430)
51 (1295)	120 (3048)	91 (2311)	83-1/4 (2115)	82-3/4 (2102)	107-11/16 (2735)
63 (1600)	144 (3658)	91 (2311)	83-1/4 (2115)	82-3/4 (2102)	131-11/16 (3345)
75 (1905)	168 (4267)	91 (2311)	83-1/4 (2115)	82-3/4 (2102)	155-11/16 (3954)

Masonry opening is 1/4" (6) per side larger and 1/4" taller than package dimensions. Measurements given in inches (millimeters).