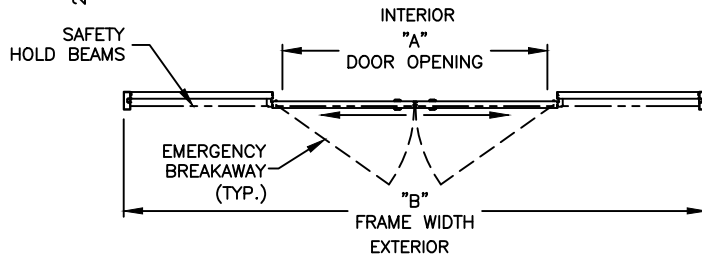


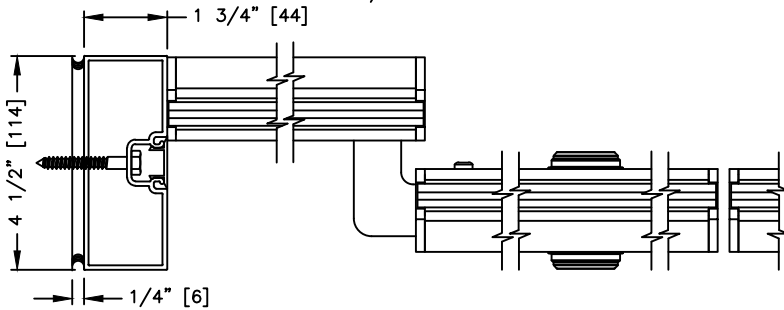
ELEVATION VIEW

SCALE: 1/4" = 1'0"



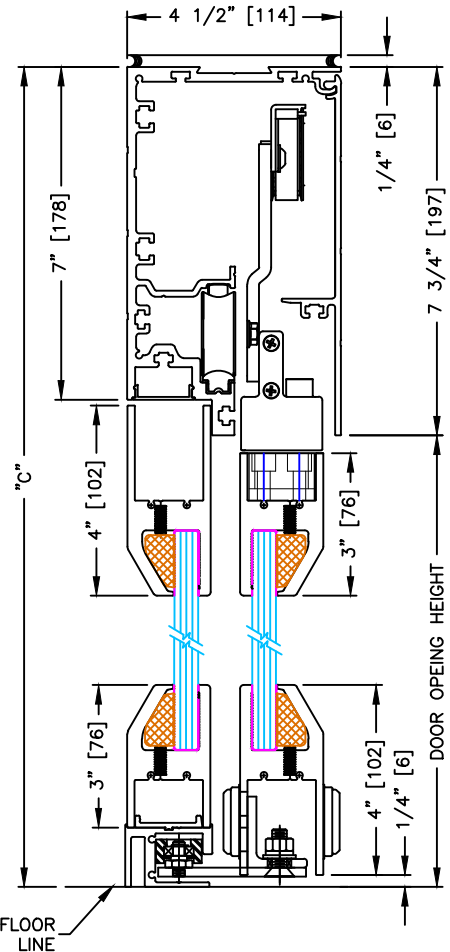
PLAN VIEW

SCALE: 1/4" = 1'0"



SECTION: 1

SCALE: 1/4 SIZE



SECTION: 2

SCALE: 1/4 SIZE

NOTES:

- 1. See sheets 51-2.86 thru 51-2.91 for optional transoms, bottom guides & thresholds.

DIMENSIONS FOR STANDARD PACKAGES

DOOR OPENING "A"	STD. PACKAGE WIDTH "B"	STD. PACKAGE HEIGHT "C" W OR W/O THRESHOLD	DOOR OPENING HEIGHT W/O THRESHOLD	DOOR OPENING HEIGHT W/ THRESHOLD	MAX OPENING MANUALLY
45 (1143)	108 (2743)	91 (2311)	83-1/4 (2115)	82-3/4 (2102)	52-1/4 (1327)
51 (1295)	120 (3048)	91 (2311)	83-1/4 (2115)	82-3/4 (2102)	58-1/4 (1480)
63 (1600)	144 (3658)	91 (2311)	83-1/4 (2115)	82-3/4 (2102)	70-1/4 (1784)
75 (1905)	168 (4267)	91 (2311)	83-1/4 (2115)	82-3/4 (2102)	82-1/4 (2089)
87 (2210)	192 (4877)	91 (2311)	83-1/4 (2115)	82-3/4 (2102)	94-1/4 (2394)

Masonry opening is 1/4" (6) per side larger and 1/4" taller than package dimensions. Measurements given in inches (millimeters).