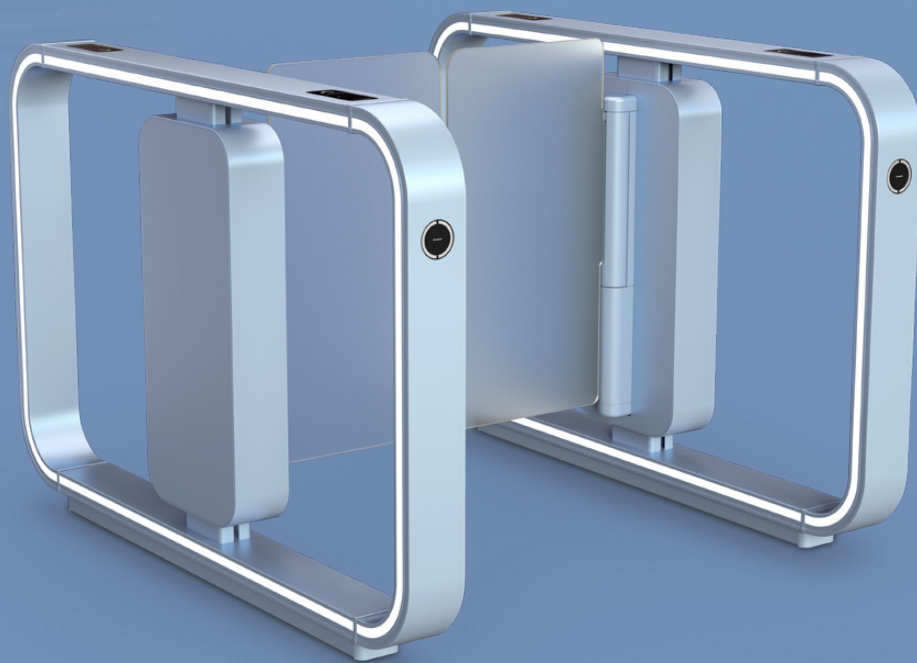




Shape new paths

Record Impression Speedgate



Your global partner
for entrance solutions

Ambition and reality just moved closer

We all know how to optimize our public spaces for efficiency: managing access and flow securely, with mechanical precision ... In this quest for efficiency, we sometimes make our world duller than it has to be.

But the reality of secure access control needn't interfere with the ambition of architecture. The flexible constructs and attentive detailing of the Record Impression Speedgate creates new possibilities for controlled high-flow passage that impresses. And with its discreet integration of leading technology, this speedgate supports functional purpose with true style.



Record Impression Speedgate

Shape new paths

Designed to impress from afar

The Record Impression Speedgate is strong on structural and finish details, providing aesthetic lift to support your brand ambitions. Combined with access control technologies, the Record Impression Speedgate brings a new level of design flexibility and impact to high-flow passage.

Card reader integration to enable seamless people flow

Wings with different size options for your comfort

Light bands for immediate user feedback

LED Pictogram that signals passage status from afar

Cabinet in Open, Center Glass and Boxed versions

Colors that complement your building's aesthetic

Sensors for intuitive, top-grade security and safety

*Frosted glass not offered, shown for illustration.



Show your true colors

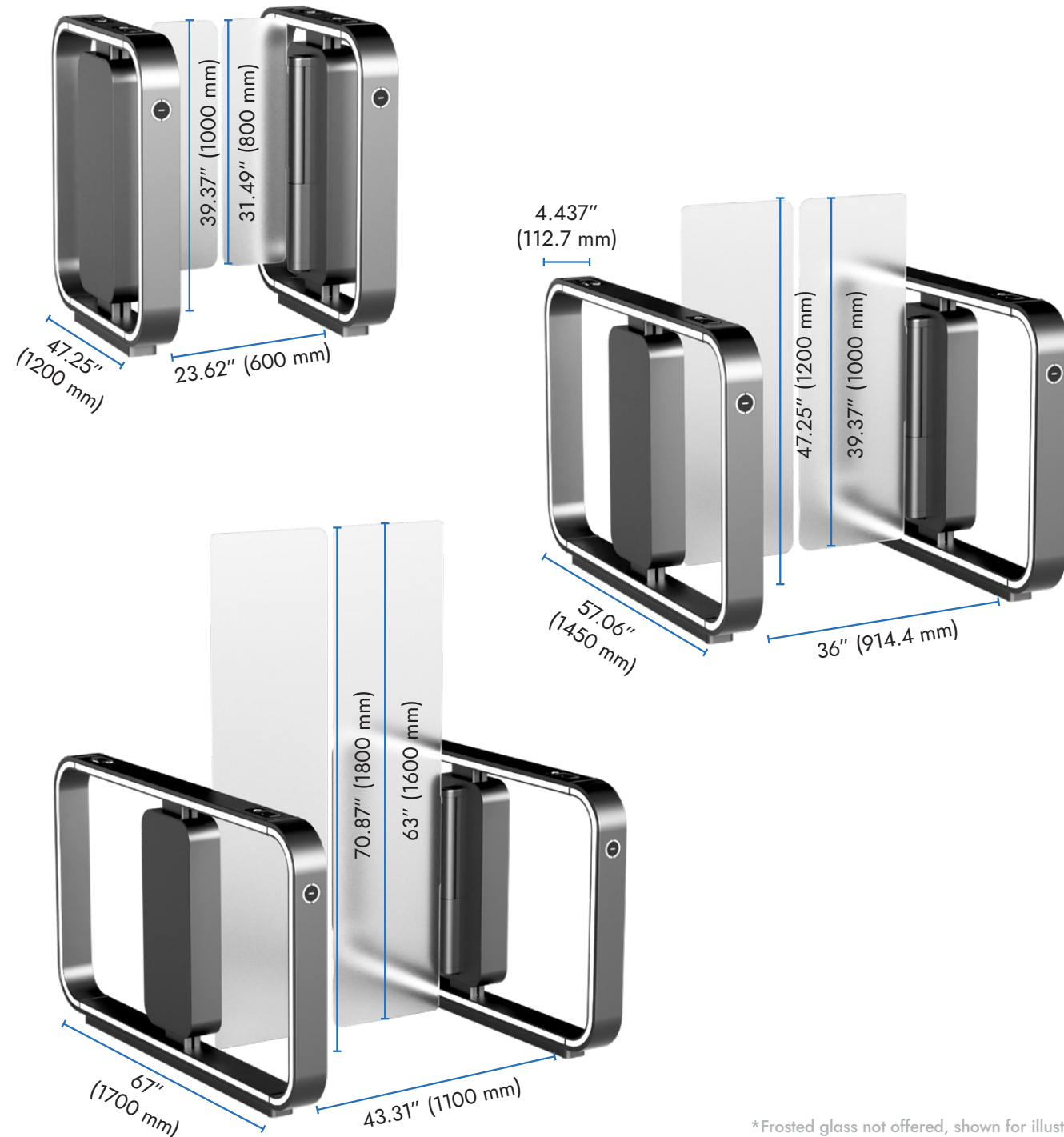
Creating an authentic interior experience just got a lot easier. The Record Impression Speedgate gives you a wide range of options to enhance your building's atmosphere with its expansive range of color, finish and design options.



Flexible options, full solutions

Dimension specifications

The Record Impression Speedgate has multiple modular assembly options. Choose your perfect passageway width and wing height to best fit your necessary security level and people flow.



*Frosted glass not offered, shown for illustration.

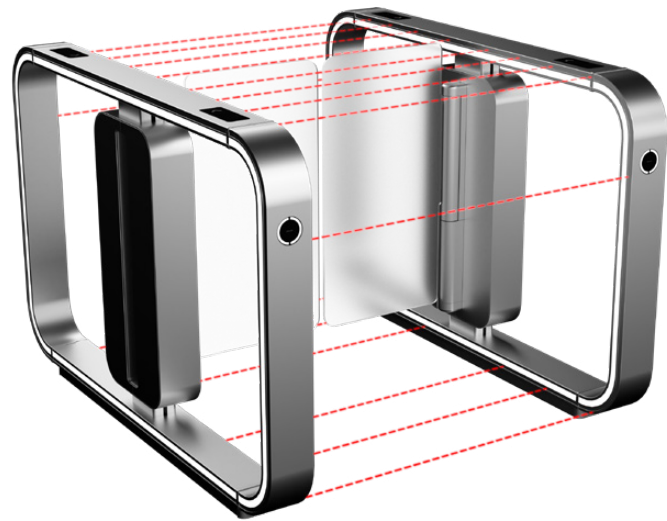
Cabinet versions

Select a cabinet design that supports the brand expression you've always planned for in your building or venue.



Safety and security sensors

Working constantly to make sure all jumpover and tailgating attempts are unsuccessful.



Card reader integration

Speed up your people flow with our latest card reader technology working in your favor.



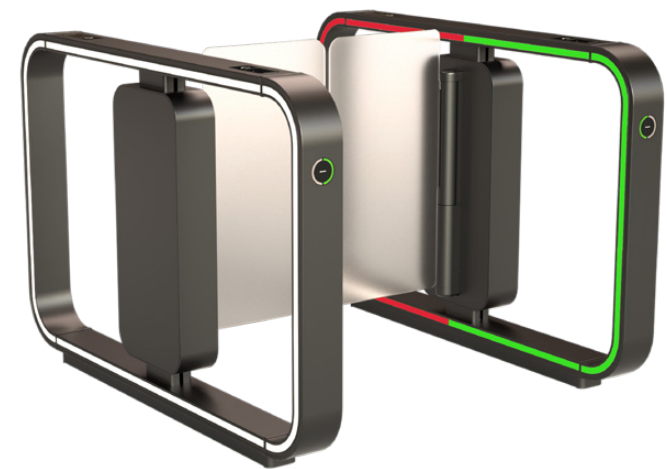
Facial recognition

Cutting-edge technology elevating and smoothing your visitors' passageway experience.



LED light bands

Designed to delight and direct your people flow with its intuitive and guiding lighting concept.



LED Pictogram

Find out the passageway status of your speedgate from afar.



Technical specifications

Power supply	110–240 VAC, 50 / 60 Hz
Auxiliary voltage	24 VDC
Operating temperature	32°F to 122°F (+0°C to +50°C)
Passageway width	23.62" (600 mm) to 43.31" (1100 mm)
Wing heights	39.37" (1000 mm) 47.25" (1200 mm) 70.86" (1800 mm)
Cabinet width	4.437" (112.7 mm)
Minimum opening/ closing time	0.7 sec (depending on passageway width)
Noise level	55 dB at 1 m distance
IP Protection	IP40 (conforming with EU standards)

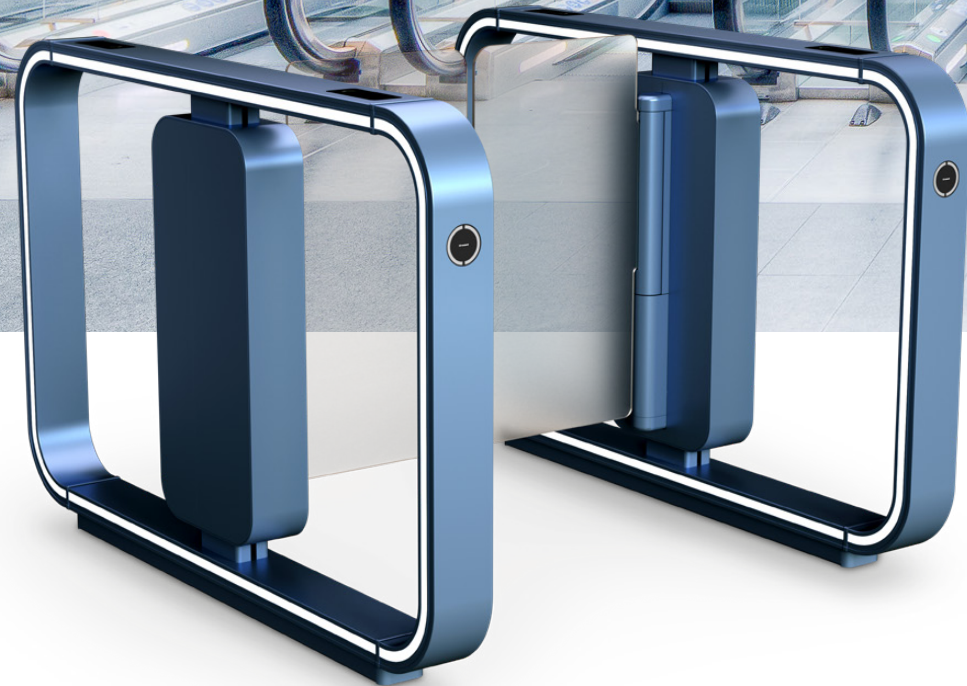
Accessories

- Top mounting integration options
- Face recognition integration
- Ramp for finished floor installations

Options

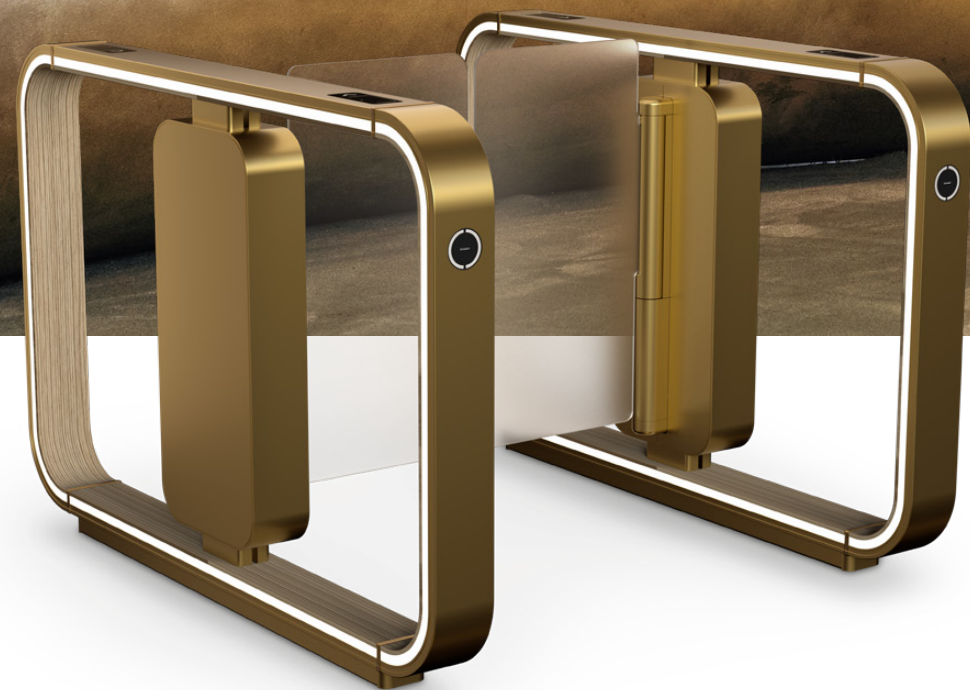
- Cabinet design: Open, Boxed or Center Glass
- Cabinet lengths:
47.25" (1200 mm), 57.06" (1450 mm), 67" (1700 mm)
- Surface treatment: RAL
- Inlay: RAL or customized

Inspire your environment



With an expansive color palette and different design finishes to work from, the Record Impression Speedgate offers feel-good efficiency – as well as multiple options for protecting your indoor environments with personality.

Lift your lanes



The Record Impression Speedgate benefits from streamlined design, thoughtful accents and finish options, letting you choose exactly what you need to truly enhance your interior – from deluxe colors to sleek cabinet styles.

Elevate the everyday



The Record Impression Speedgate combines aesthetic structural details and finishes with the latest digital entrance technology. The result is secure high-flow passage with presence, and the capacity to impress as well as it performs.

Our complete product portfolio includes:

- » Automatic Sliding Doors
- » Swing Door Operators
- » Manual ICU Doors
- » Speedgates
- » Exit Lanes
- » Security Portals

Entrance solutions for all

Our products are sold, serviced and installed through our extensive network of authorized distributors located throughout the USA and Canada.

We want your doors to succeed

Since Record's inception in 1953, the center of all our product development and related services has been our customer — in other words, you. And while business needs have evolved significantly over the last 70 years (together with our product portfolio), one thing hasn't changed. Your full satisfaction with the quality of our products and services is still our single, most important goal. Because we know that when your doors succeed, you succeed. And that's all that matters.





Record Canada

221A Racco Pkwy
Vaughan, ON L4J 8X9
Canada
T 877 348 6837
www.recorddoors.ca

Record USA

4324 Phil Hargett Ct.
Monroe, NC 28110
USA
T 800 438 1937
E info@recorddoors.com
www.recorddoors.com

The Record Group (part of the ASSA ABLOY Group) is an industry-leading manufacturer of automatic door systems. Founded in Fehraltorf, Switzerland in 1953, Record has historically relied on combining its global presence with local reach to achieve customer satisfaction and success; pushing the boundaries of product innovation from the start, Record's product range today includes top-quality sliding doors, swing doors, ICU doors and security entrance solutions.

Find out more at www.recorddoors.com

Part of ASSA ABLOY