



Record FlipFlow

Exit Lane Breach Control

Record FlipFlow exit lanes provide a high level of security for a wide range of applications. The user friendly, one-way traffic, security system delivers a high volume throughput, without jeopardizing controlled access.

Featuring advanced detection and control technology, integrated with functional and reliable barrier components, these one-way exit lanes provide security and safety in a practical, modular construction.

The non-intrusive style does not impede pedestrian flow. The structural design is robust and easily maintained. Delivers safety and security at the desired level while being user friendly and easily maintained.

Record FlipFlow is ideal for applications where discreet but reliable security and safety are valued including secure environments such as airports, seaports, and train stations. Alternate uses may include access to sensitive areas in public, commercial or industrial buildings, or entrances to courthouses and judicial buildings.

Product features

The only manufacturer to offer optional object detection on side panels and ceiling

Traffic signals at entrance and exit doors

Interior maintenance hatches

Multiple inputs and outputs for integration into an airport's building management system

Real Time software for remote monitoring and function controls

Customizable voice module

Stainless steel construction

Models

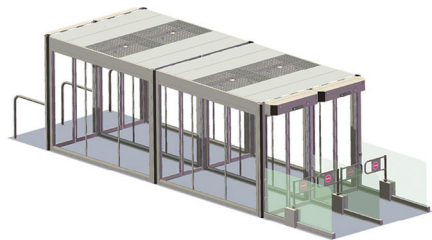


FlipFlow Twin Extended with swing gates at the exit side for increased security (shown with optional side rails on entry side).



FlipFlow Triple offers enhanced security with two safe areas between three pairs of doors.

FlipFlow Triple Extended with swing gates at the exit side for increased security (shown with optional side rails on the entry side).



The FlipFlow can be installed as a single unit or as a side by side combination.

Options Include:

- » Side rails and barrier at exit
- » Integration of access control system
- » Battery back-up for continuous use
- » Custom finishes
- » Optional opaque glass
- » Gates

Technical Specs/Data

Configurations	Twin Extended or Triple; can be installed as a single unit or side by side
Recommended Widths	35.43", 43.3", and 47.25"
Total Height	7'9"
Surface Options	#3 stainless steel finish or powder coated carbon steel
Glass	5/16" laminated safety glass; extensions are 1/2" safety glass
Electrical Requirements	110 volt, 20a fuse (per lane) 1000 watt for Triple extended, 600 watt for twin, 200 watt for standby mode
Environmental Conditions	For indoor use only
Throughput	2,700 passengers/lane (flow mode) 500 passengers/lane (interlock mode) <i>* per hour; calculated from end to end</i>

Technical data subject to change without notice.

Operating Modes

Off	All doors are closed.
Open	All doors are open with breach control active allowing exit-only use for passengers. Breach control can be disabled to allow bidirectional use for airport personnel.
Flow	Breach control active. Doors open when passengers approach entrance door. After the door closes the secure areas between doors are scanned for objects left behind. Passenger throughput up to 2,000 persons per hour, per lane.
Interlock	Entry door opens only when the previous passenger has cleared the next door and it has closed. Passengers enter tunnel, the next door will only open when the previous door has closed. This mode provides the highest security level, however, passenger throughput is reduced to 500 persons per hour, per lane.
Automatic	System switches automatically between FLOW and INTERLOCK modes depending on the volume of traffic.
Cleaning	Exit doors open with a remote signal provided from the airport, alarm triggers after timeout.
Emergency Opening/Closing	Doors open or close by remote signal provided from the airport, backup battery guarantees extended operation in case of power failure.