

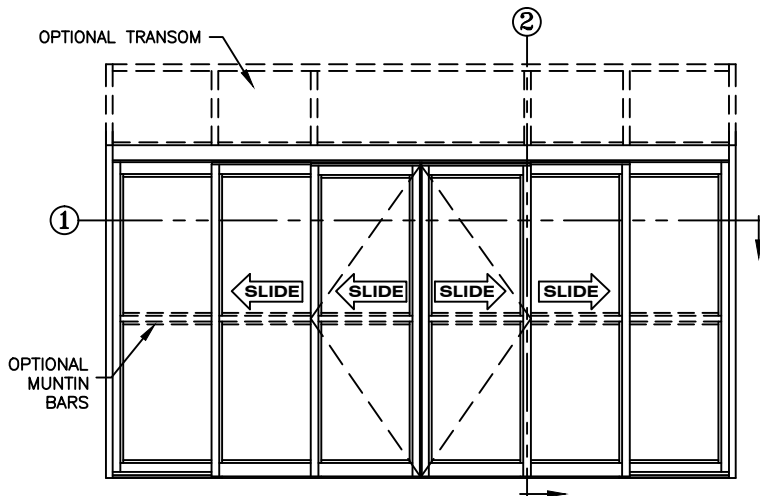


**record-usa**  
4324 PHIL HARGETT CT.  
MONROE, NC 28110  
(704) 289 - 9212

JOB NAME: \_\_\_\_\_  
LOCATION: \_\_\_\_\_

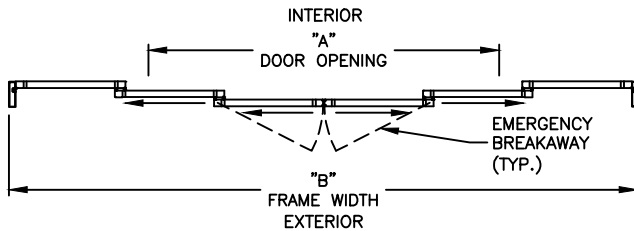
**5900 SERIES MANUAL SLIDING DOORS**

TYPE: 5921-1, 0-X-SX-SX-X-0,  
BI-PART TELESCOPE PAGE 59-2.23



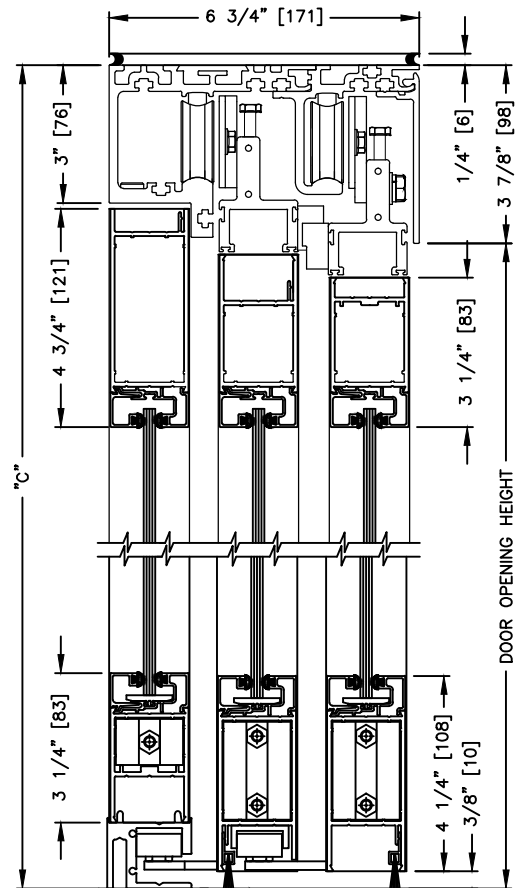
**ELEVATION VIEW**

SCALE: 1/4" = 1'0"



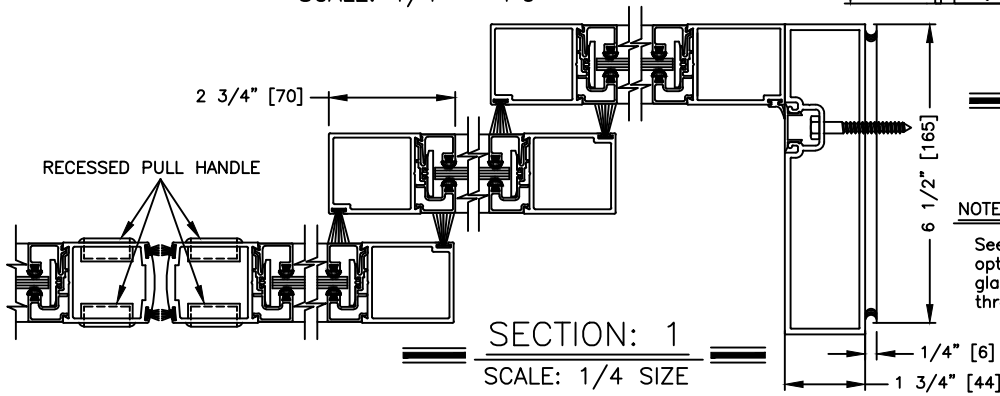
**PLAN VIEW**

SCALE: 1/4" = 1'0"



**SECTION: 2**

SCALE: 1/4 SIZE



**SECTION: 1**

SCALE: 1/4 SIZE

**NOTE:**  
See sheets 59-2.39 thru 59-2.45 for optional muntins, bottom rails, transoms, glazing variations, bottom guides & thresholds.

**DIMENSIONS FOR STANDARD NARROW STILE PACKAGES**

DOOR OPENING "A"	STD. PACKAGE WIDTH "B"	STD. PACKAGE HEIGHT "C"	DOOR OPENING HEIGHT	MAX OPENING MANUALLY
44-1/16 (1119)	96 (2438)	87 (2210)	83-1/8 (2111)	51-1/8 (1299)
52-1/16 (1322)	108 (2743)	87 (2210)	83-1/8 (2111)	59-1/8 (1502)
60-1/16 (1526)	120 (3048)	87 (2210)	83-1/8 (2111)	67-1/8 (1705)
76-1/16 (1932)	144 (3658)	87 (2210)	83-1/8 (2111)	83-1/8 (2111)
91-1/16 (2338)	168 (4267)	87 (2210)	83-1/8 (2111)	99-1/8 (2518)

Masonry opening is 1/4" (6) per side larger and 1/4" taller than package dimensions. Measurements given in inches (millimeters).