

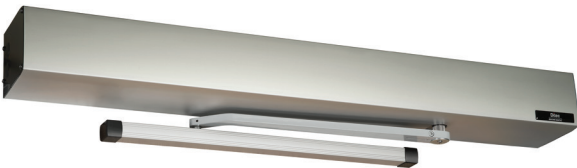
HA9 Easy Selection Guide

PUSH APPLICATIONS



Finish	Header Length	Door Width	HA9 Part #
Clear	39"	36"	HA9-101-39
	45"	42"	HA9-101-45
	51"	48"	HA9-101-51
	75"	36" pair	HA9-101-75
Dark Bronze	39"	36"	HA9-105-39
	45"	42"	HA9-105-45
	51"	48"	HA9-105-51
	75"	36" pair	HA9-105-75

PULL APPLICATIONS



Finish	Header Length	Door Width	HA9 Part #
Clear	39"	36"	HA9-102-39
	45"	42"	HA9-102-45
	51"	48"	HA9-102-51
	75"	36" pair	HA9-102-75
Dark Bronze	39"	36"	HA9-106-39
	45"	42"	HA9-106-45
	51"	48"	HA9-106-51
	75"	36" pair	HA9-106-75

Note: This list represents standard stock sizes. For special sizes or options, please contact Customer Service at 866.901.4284 or CustomerService.Ditec.US@recorddoors.com.